

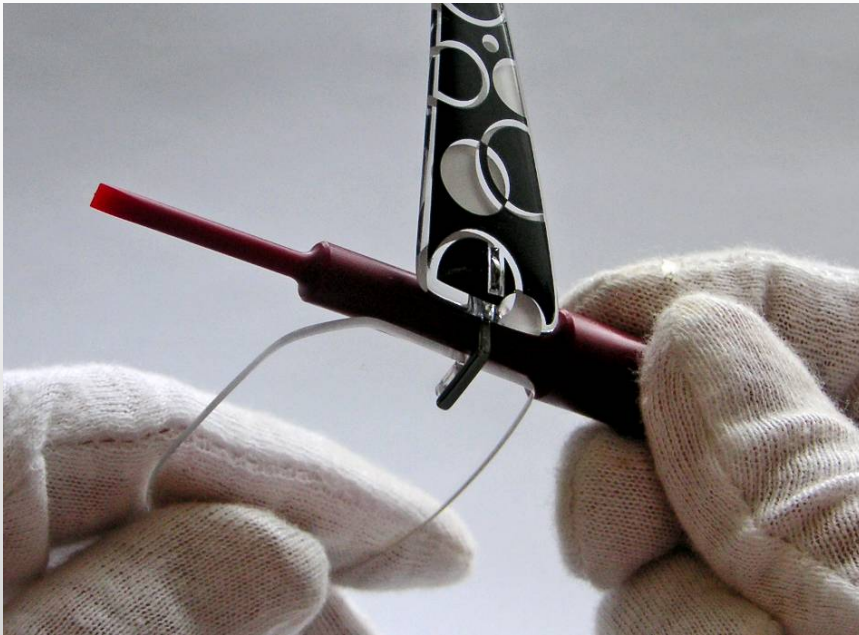


Silhouette[®]

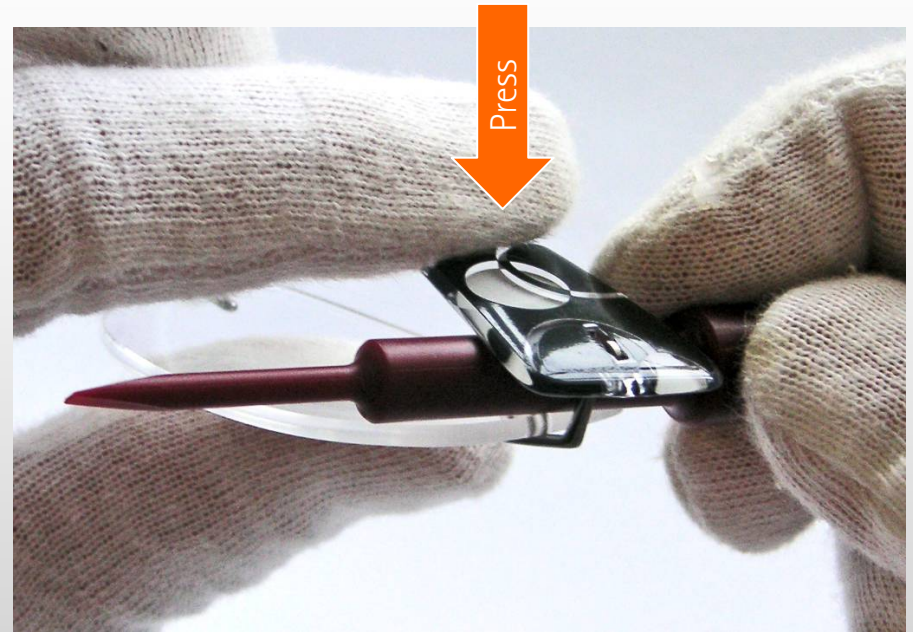
The Studio Collection

Silhouette

Temple Disassembly

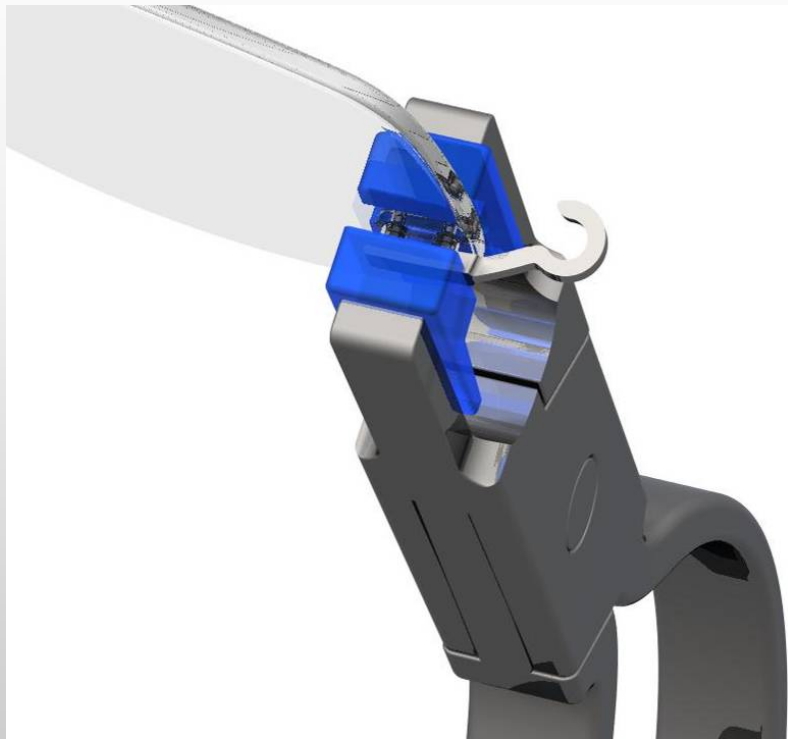


Place disassembly tool (AC 336) between lens and temple using the necessary diameter on tool.

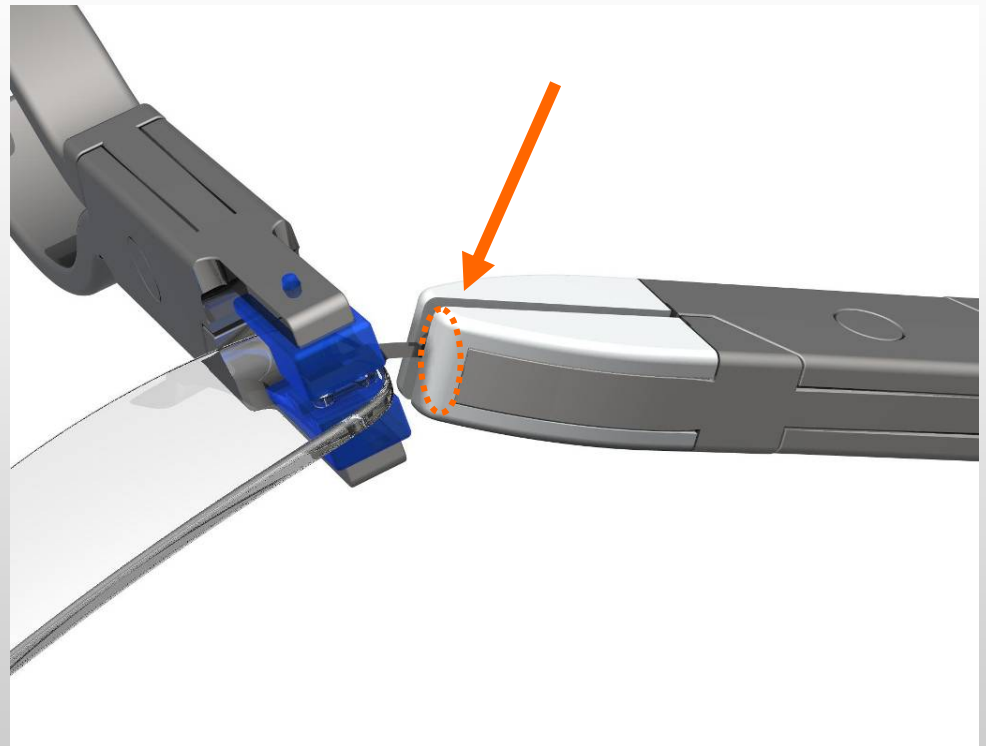


Close temple and press together behind disassembly tool (AC 336).

Inclination



Dismount temple.
Hold the lens fixation with mounting
pliers (P 0023).



Adjust inclination with pliers.
Enclose loop completely with sideparts of pliers.

Silhouette

Reduction of temple opening



Dismount temple.
Hold lens fixation firmly with pliers.
Support pliers with your thumb to avoid the lens from slipping.
Reduce temple opening by placing pressure against the safe edge of a table.

Enlarging temple opening

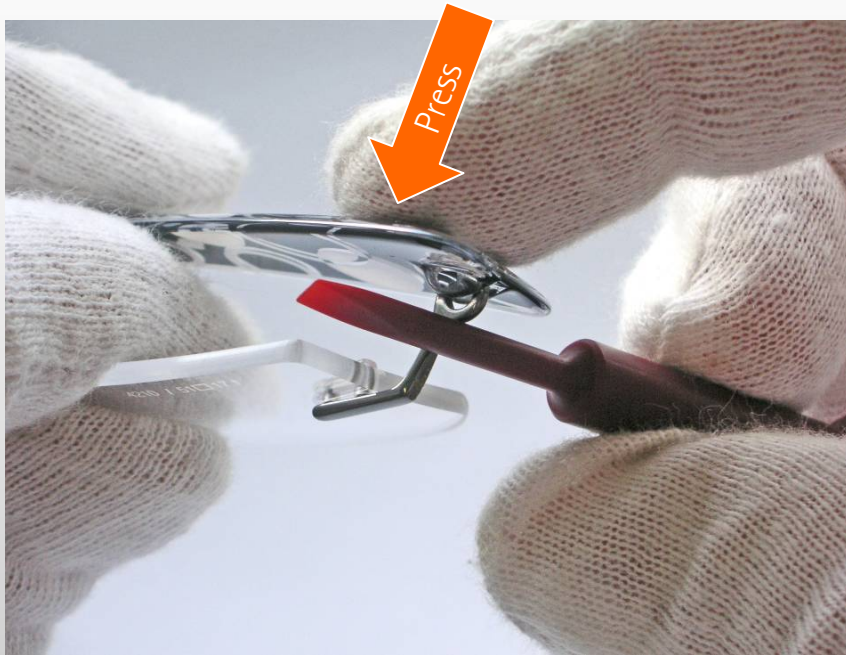


Dismount temple.
Hold lens fixation firmly with pliers.
Bend side parts with long nose pliers
NOTE: Protect the side parts with plastic or leather.

Silhouette

Temple Mounting Version 1

Temple Mounting Version 2



Place sideparts at opening of SPX temple and press together.

Silhouette

Temple Curving



Curve temple ends in large movements.

Do not heat or fold.